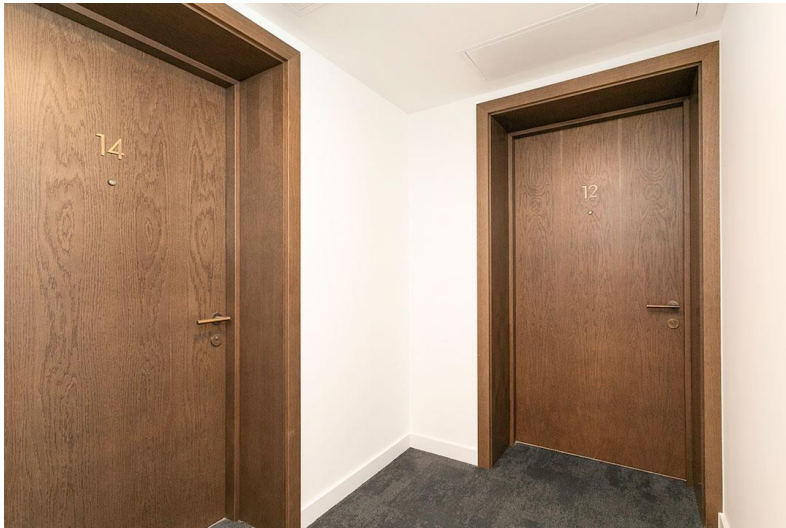


# EnduroSC PAS24 Entrance Doorset

Not to scale



CGI/ PULL SIDE

## Specification

All fire doors are purpose-made to sizes required, extensive size ranges are validated by an independent test or authoritative assessment

- Tested to PAS24: 2022
- Door leaf constructed from a severe duty core tested to DD171, with hardwood lipping's on all 4 sides
- Structural opening size of up to 2400mm high and 1050mm wide
- Fire rating - FD30S (44mm) and FD60S (54mm)
- Acoustic rating - 29dB, 32dB and 35dB options
- Smoke/ Air tested - compression smoke seals tested in accordance with BS - 9999:2017

## Ironmongery details

- High-security key or electronic locking options available all tested to PAS24
- Wide variety of lever handle options
- Concealed or surface mounted door closers
- Security letter box & door viewer are optional
- Choice of ironmongery finishes - stainless steel, black, brass, bronze and copper, PVD etc

## Door leaf/set finishes

- Primed, Factory painted, Veneer, Stained, Laminated. All available in design options - flush, grooved or panelled

## Performance

- Fire tested to BS 476 part 22
- All fire rated doorsets manufactured under the stringent IFC Certification scheme
- Doorsets meet requirements of Approved Document M for clear opening widths

## Configuration

- DT03 - PAS24 Entrance Door (Single)

## Suitable for...

- ✓ PAS24 Entrance Apartment Doorsets

## Packaging

Protective packaging and delivered in palletised form (varies per order)

